

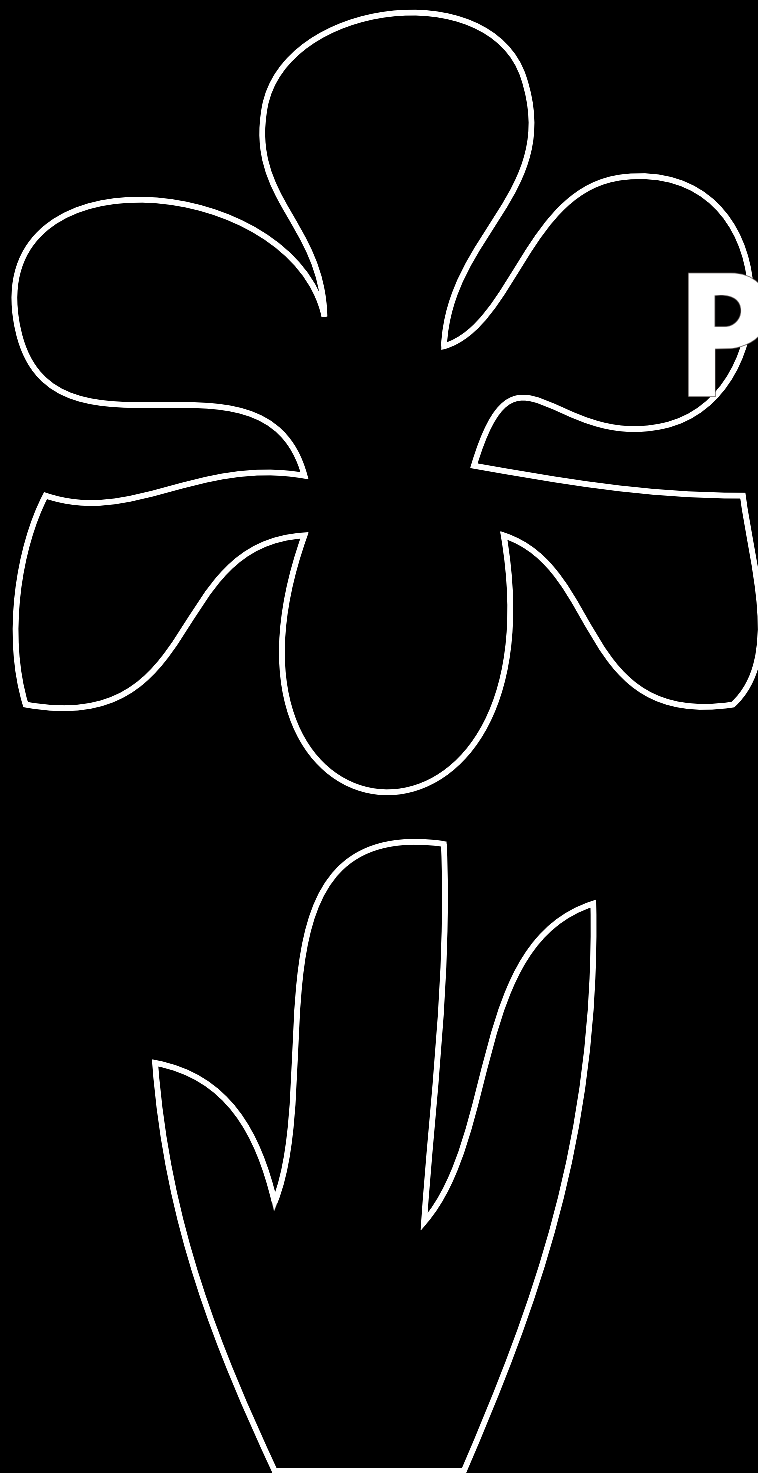
Iris U.S. Customer Service
800.323.9906
www.irisus.com



USIRISPM13



Made in the USA



Porcelainwood





Greywood 6" x 24"

Porcelainwood Collection

Rectified Edge

The tiles are mechanically finished with precise edges, allowing for tighter grout joint spacing during installation.



Porcelainwood Collection



Rectified



32%



6 x 24
IRG0624034

Crystalwood



6 x 24
IRG0624030

Sandwood



6 x 24
IRG0624032

Brownwood



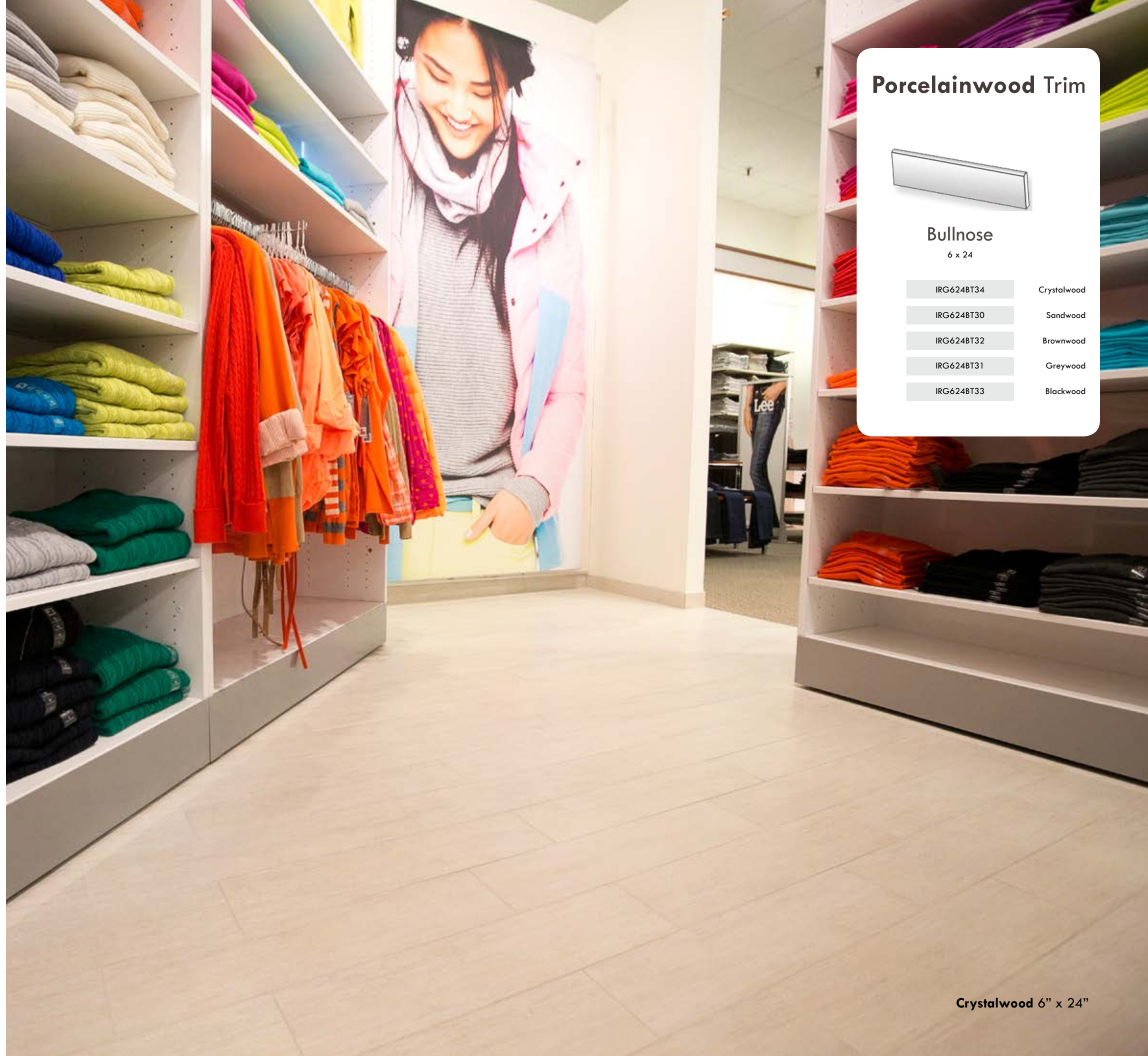
6 x 24
IRG0624031

Greywood



6 x 24
IRG0624033

Blackwood



Porcelainwood Trim



Bullnose

6 x 24

IRG624BT34	Crystalwood
IRG624BT30	Sandwood
IRG624BT32	Brownwood
IRG624BT31	Greywood
IRG624BT33	Blackwood

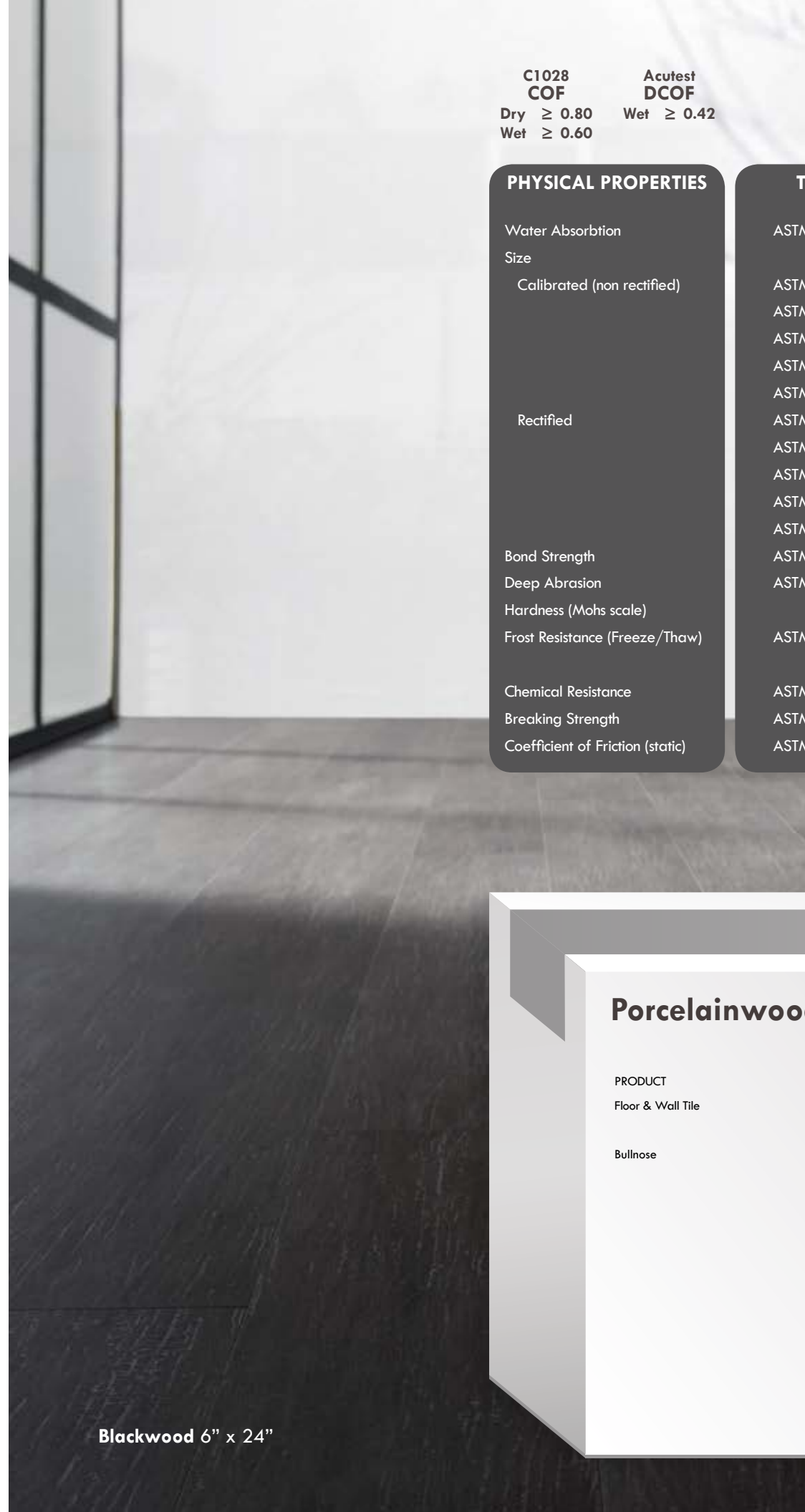
Crystalwood 6" x 24"



Sandwood 6" x 24"



Brownwood 6" x 24"



Blackwood 6" x 24"

Porcelainwood Tech Specs

C1028
COF
Dry ≥ 0.80
Wet ≥ 0.60

Acutest
DCOF
Wet ≥ 0.42

PHYSICAL PROPERTIES	TEST	INDUSTRY STANDARDS	IRIS US RESULTS COLORED BODY
Water Absorption	ASTM C373	0.5% Maximum	$\leq 0.1\%$
Size			
Calibrated (non rectified)	ASTM C499	• Range of Thickness (inch) 0.040	≤ 0.040
	ASTM C499	• Average Facial Dimension $\pm 0.50\%$	$\leq \pm 0.50\%$
	ASTM C485	• Warpage $\pm 75\%$ on any edge	$\leq \pm 0.75\%$
	ASTM C485	• Warpage $\pm 50\%$ on diagonal	$\leq \pm 0.50\%$
	ASTM C502	• Wedging $\pm 0.50\%$	$\leq \pm 0.50\%$
Rectified	ASTM C499	• Range of Thickness (inch) 0.040	≤ 0.040
	ASTM C499	• Average Facial Dimension $\pm 0.25\%$	$\leq 0.25\%$
	ASTM C485	• Warpage $\pm 0.40\%$ on any edge	$\leq 0.40\%$
	ASTM C485	• Warpage $\pm 0.40\%$ on diagonal	$\leq 0.40\%$
	ASTM C502	• Wedging $\pm 0.25\%$	$\leq 0.25\%$
Bond Strength	ASTM C482	50 psi or greater	> 200 psi
Deep Abrasion	ASTM C1243	< 175 mm ³	< 150 mm ³
Hardness (Mohs scale)		No requirement	≥ 7
Frost Resistance (Freeze/Thaw)	ASTM C1026	No sample must show alterations to surface	No cracking or spalling occurred
Chemical Resistance	ASTM C650	No requirement	Class A
Breaking Strength	ASTM C648	250 lbf or greater	≥ 350 lbf
Coefficient of Friction (static)	ASTM C1028	No requirement	Per collection

Data taken from a representative colored body collection. Individual product testing can be conducted by request.
Coefficient of Friction: All values given are for matte or honed material. No values are given for polished material.
Iris U.S. does not recommend polished surfaces in areas subject to exposure from grease, oil or water.
(All values are based on ASTM C1028 and Acutest DCOF.)

Porcelainwood Packaging

PRODUCT	SIZE	BOX PIECES	BOX SF	PALLET BOXES	PALLET SF	THICKNESS	WEIGHT LB/SF
Floor & Wall Tile	6 x 24	16	15.585	40	623.4	8	3.55
							LB PER PIECE
Bullnose	6 x 24	14	13.637	-	-	8	3.55